

TROMBONE

TE DEUM

TUIST GEORGE TUCKER

Handwritten musical notation on three staves. The top staff is in treble clef, the middle in alto clef, and the bottom in bass clef. The music consists of various note values including quarter, eighth, and sixteenth notes, along with rests and accidentals. There are two yellow adhesive tape patches on the bottom staff.

Handwritten musical notation on three staves. The top staff is in treble clef, the middle in alto clef, and the bottom in bass clef. The music continues with similar note values and accidentals. A large, irregular brown stain is present on the left side of the page, partially overlapping the first two systems.

Handwritten musical notation on three staves. The top staff is in treble clef, the middle in alto clef, and the bottom in bass clef. The music continues with similar note values and accidentals. A small handwritten mark is visible on the bottom staff.

Handwritten musical notation on three staves. The top staff is in treble clef, the middle in alto clef, and the bottom in bass clef. The music continues with similar note values and accidentals. There are two yellow adhesive tape patches on the bottom staff.



Handwritten musical notation for the first system, consisting of three staves. The top staff is in treble clef with a key signature of one sharp (F#) and a 3/4 time signature. It contains a melody with eighth and quarter notes, some beamed together, and a fermata. The middle staff is in treble clef and contains a melody with quarter and eighth notes. The bottom staff is in bass clef and contains a bass line with quarter and eighth notes, including triplets and slurs. A red '3' is written above the first measure of the middle staff, and a red '4' is written above the first measure of the bottom staff.

Handwritten musical notation for the second system, consisting of three staves. The top staff continues the melody from the first system. The middle staff continues the melody with quarter and eighth notes. The bottom staff continues the bass line with quarter and eighth notes, including triplets and slurs.

Handwritten musical notation for the third system, consisting of three staves. The top staff continues the melody. The middle staff continues the melody with quarter and eighth notes. The bottom staff continues the bass line with quarter and eighth notes, including triplets and slurs.

Handwritten musical notation for the fourth system, consisting of three staves. The staves are mostly empty, with a large, thick black line drawn across them from the bottom left to the top right, possibly indicating a correction or a placeholder.

Handwritten musical notation for the first system, consisting of three staves. The top staff is in treble clef, the middle in treble clef, and the bottom in bass clef. The music features various notes, rests, and accidentals (sharps, flats, naturals).

Handwritten musical notation for the second system, consisting of three staves. This system is characterized by the use of triplets in all three staves, indicated by a '3' above the notes and a bracket. The notation includes treble and bass clefs and various accidentals.

Handwritten musical notation for the third system, consisting of three staves. The upper staves feature triplets and slurs, while the bottom staff continues with rhythmic patterns. The notation includes treble and bass clefs and various accidentals.

Handwritten musical notation for the fourth system, consisting of three staves. This system features slurs and various note values across all staves. The notation includes treble and bass clefs and various accidentals.

Handwritten musical notation for the first system, consisting of three staves. The top staff is in treble clef, the middle in treble clef, and the bottom in bass clef. It contains various notes, rests, and accidentals.

Handwritten musical notation for the second system, consisting of three staves. This system features several triplet markings (indicated by a '3' in a circle) over groups of notes.

Handwritten musical notation for the third system, consisting of three staves. The notation continues with notes and accidentals across the staves.

Four empty musical staves at the bottom of the page.

TEDEUM

TUI ST. GEORGE TUCKER

TRUMPETS

This image shows a page of handwritten musical notation on ten staves. The notation is written in black ink on aged, yellowish paper. The first staff begins with a treble clef and a common time signature (C). The music consists of various note values, including quarter, eighth, and sixteenth notes, as well as rests and accidentals (sharps, flats, and naturals). Some notes are grouped with slurs. The notation is somewhat dense and appears to be a working draft or a personal manuscript. The paper shows signs of wear, including a large stain in the top left corner and some tape at the bottom right.



A handwritten musical score consisting of ten staves. The notation includes treble clefs, a key signature of one sharp (F#), and a 4/4 time signature. The music features a variety of rhythmic patterns, including eighth and sixteenth notes, as well as rests. There are several instances of triplets and slurs. The handwriting is clear and legible. The score is organized into measures by vertical bar lines.

*Allegro*

V.S.

Handwritten musical score for the first system. It consists of three staves. The top staff is in treble clef, starting with a common time signature (C) and a key signature of one sharp (F#). It contains several measures of music with notes and rests. The middle staff is in bass clef, starting with a common time signature (C) and a key signature of one sharp (F#). It contains several measures of music with notes and rests. The bottom staff is in bass clef, starting with a common time signature (C) and a key signature of one sharp (F#). It contains several measures of music with notes and rests. Dynamics include *mf* and *pp*. Time signatures  $\frac{3}{4}$  and  $\frac{2}{4}$  are written in red ink. There are also some handwritten annotations like  $\frac{3}{4}$  and  $\frac{5}{8}$ .

Handwritten musical score for the second system. It consists of three staves. The top staff is in treble clef, starting with a common time signature (C) and a key signature of one sharp (F#). It contains several measures of music with notes and rests. The middle staff is in bass clef, starting with a common time signature (C) and a key signature of one sharp (F#). It contains several measures of music with notes and rests. The bottom staff is in bass clef, starting with a common time signature (C) and a key signature of one sharp (F#). It contains several measures of music with notes and rests. Dynamics include *pp* and *trm*. Time signatures  $\frac{3}{4}$  and  $\frac{3}{4}$  are written in red ink. There are also some handwritten annotations like  $\frac{3}{4}$  and  $\frac{3}{4}$ .

This is a handwritten musical score on aged paper, featuring several systems of staves. The notation includes treble and bass clefs, notes, rests, and dynamic markings such as *sf*, *p*, and *staccato*. Red ink annotations, including 'A2', 'A3', and 'A4', are scattered across the score, often marking specific measures or sections. The paper shows signs of wear, including yellowing and some staining, particularly at the bottom edge. The score is organized into systems, with some systems containing multiple staves. The handwriting is clear and legible.

Handwritten musical score for piano, consisting of three systems of staves. The notation includes treble and bass clefs, notes, rests, and dynamic markings. Red annotations are present throughout the score, including the numbers 3/4, 2/4, and 3/4, and the word "TURN".

System 1 (top):  
- Treble clef: 3/4, 3/4, 3/4, 3/4  
- Bass clef: 3/4, 3/4, 3/4, 3/4  
- Annotations: "tr" above notes in the second and fourth measures.

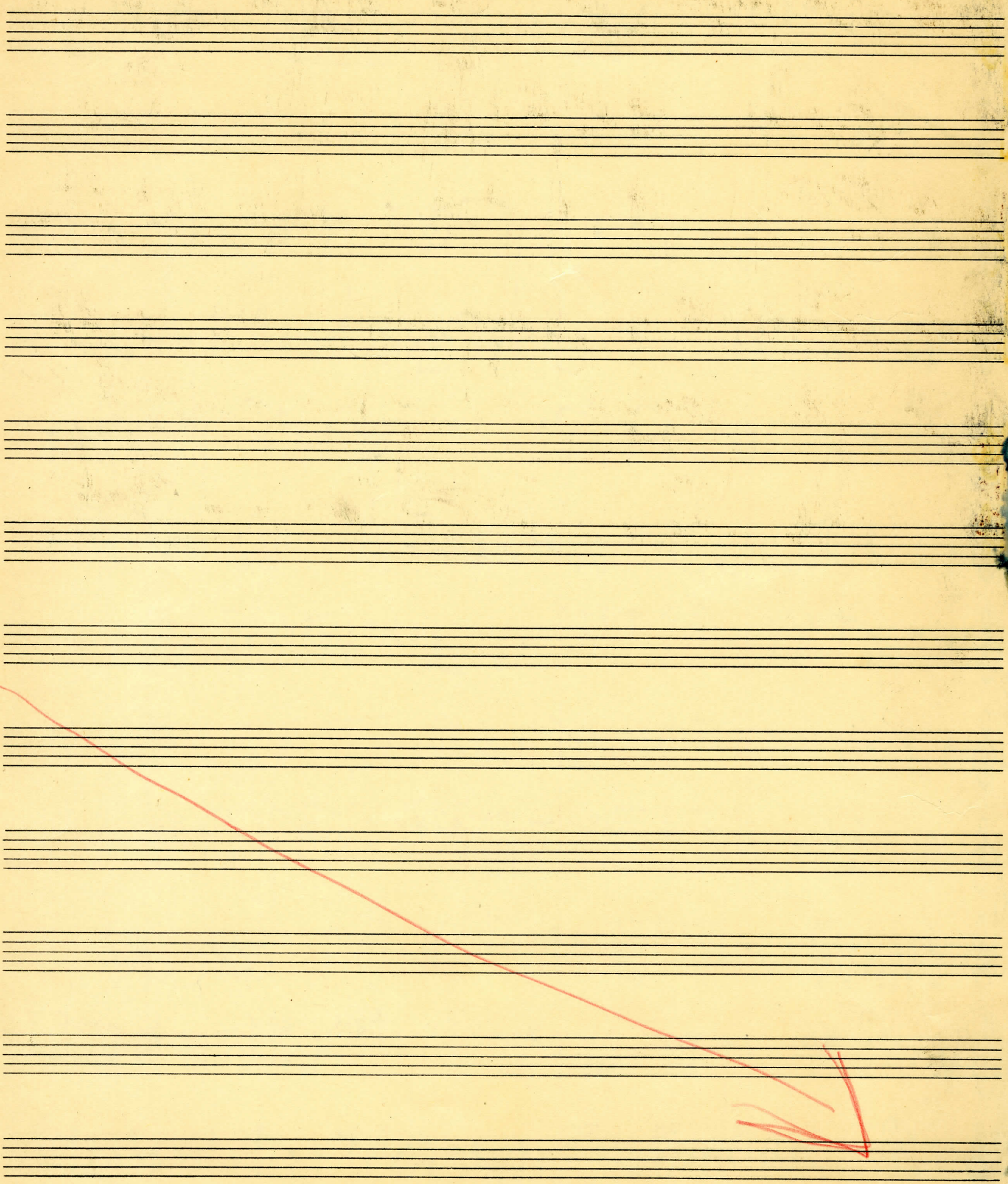
System 2 (middle):  
- Treble clef: 3/4, 3/4, 3/4  
- Bass clef: 3/4, 3/4, 3/4  
- Annotations: "tr" above notes in the first measure.

System 3 (bottom):  
- Treble clef: 3/4, 3/4, 3/4, 2/4, 3/4  
- Bass clef: 3/4, 3/4, 3/4, 2/4, 3/4  
- Annotations: "tr" above notes in the second measure; "B C A" below notes in the fourth measure; "TURN" written in red below the staff.

Handwritten musical score for piano, showing a single system of staves. The notation includes treble and bass clefs, notes, and rests. A red 3/4 time signature is written in the first measure.

System 4 (bottom):  
- Treble clef: 3/4  
- Bass clef: 3/4

(6)



$\text{d}=\text{J}$  LARGO

The page contains ten blank musical staves at the top. Below them is a system of handwritten musical notation. This system consists of two systems of two staves each, enclosed in large curly braces. The first system begins with a double bar line. The notation includes treble clefs, various note values (quarter, eighth, and sixteenth notes), rests, and accidentals (sharps and naturals). The second system continues the notation with similar note values and accidentals. The handwriting is in black ink on aged, slightly stained paper.



in Bb

I

II

3

3

3

3

3

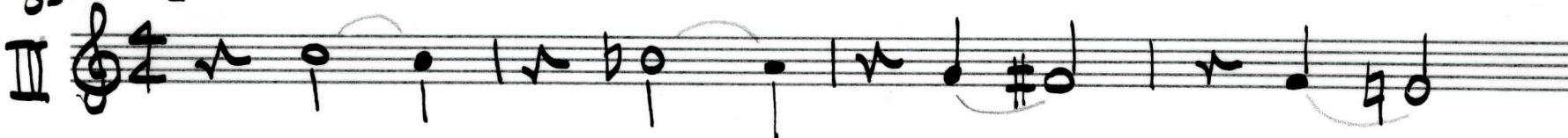
3

3

3



*♩ = 60* *Larghetto*



IV

♩ = ♩ throughout

V

In Bb

Handwritten musical notation on four staves. The first staff begins with a treble clef and a key signature of two flats (Bb). The notation includes various note values, rests, and accidentals. A large slur covers a sequence of notes in the third staff. The fourth staff ends with a double bar line.

Ten blank musical staves for writing.

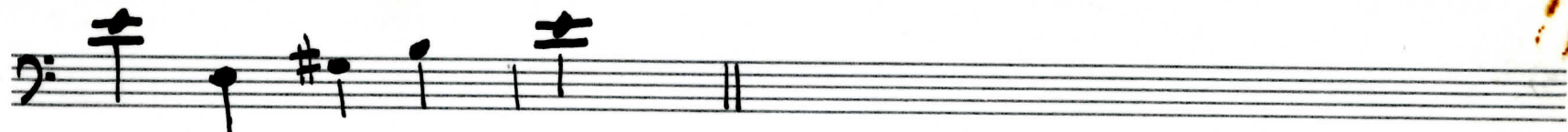
Moderato

I

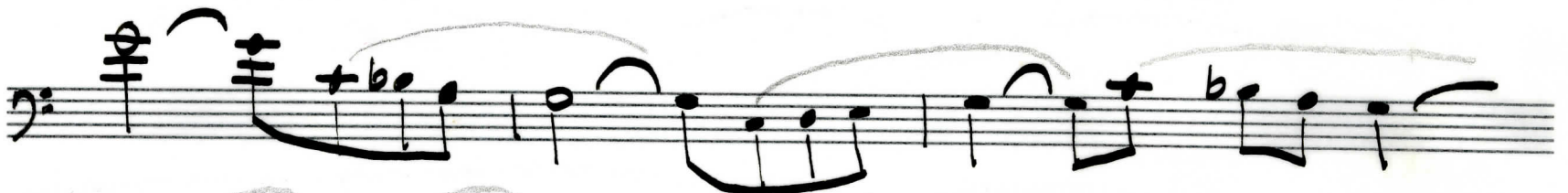
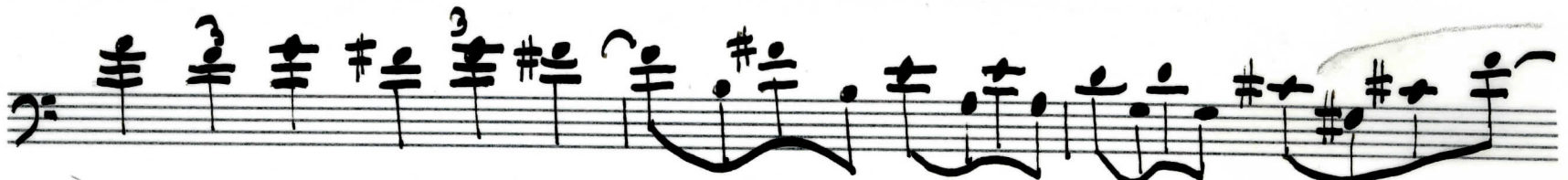
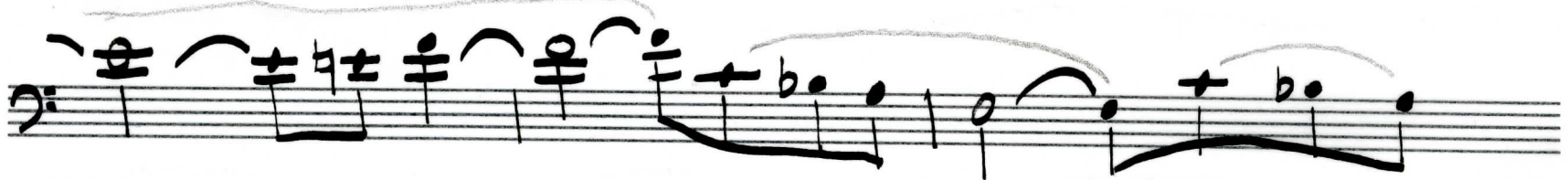
Handwritten musical notation for the first system, consisting of six staves. The notation includes various notes, rests, and accidentals, with some notes beamed together and slurs over groups of notes.

II

Handwritten musical notation for the second system, consisting of six staves. This system includes triplets and a 6# marking above a note.



*Larghetto*



IV

Handwritten musical score for section IV, consisting of 10 staves of music in bass clef with a 4/4 time signature. The music features various rhythmic patterns, including triplets and slurs, and includes accidentals such as flats and sharps.

$\text{♩} = \text{♩}$  throughout

V

Handwritten musical score for section V, consisting of 4 staves of music in bass clef. The first staff has a common time signature (C) and a key signature of one sharp (F#). The music includes slurs and triplets.





Moderato

I

Handwritten musical score for Part I, measures 1-6. The music is in treble clef with a key signature of one sharp (F#) and a common time signature (C). It features a variety of note values including quarter, eighth, and sixteenth notes, along with rests and slurs. A 'tr' marking is present above the fifth measure.

II

Handwritten musical score for Part II, measures 1-6. The music is in treble clef with a key signature of one sharp (F#) and a common time signature (C). It is characterized by frequent triplet markings (indicated by the number 3) and slurs. The notation includes eighth and sixteenth notes.

III

*Larghetto*

Handwritten musical score for guitar, featuring ten staves of music. The notation includes various notes, rests, and triplets, with some notes marked with a '+' sign. The score is written in a single system, with the first staff starting with a treble clef and a 4/4 time signature. The music is characterized by complex rhythmic patterns and melodic lines, with many notes beamed together in groups of three. The paper shows signs of age, including foxing and staining.

Two empty musical staves, consisting of five lines each, positioned at the bottom of the page.

♩ = ♩ throughout

Handwritten musical score for guitar, consisting of eight staves. The notation includes various rhythmic values, accidentals, and articulation marks. The first staff begins with a treble clef, a key signature of one sharp (F#), and a common time signature (C). The music features a variety of note values including quarter, eighth, and sixteenth notes, as well as rests. There are several triplet markings (indicated by a '3' and a bracket) and a quintuplet (indicated by a '5' and a bracket). The score concludes with a double bar line on the eighth staff.

Four sets of empty musical staves, each consisting of five lines, provided for additional notation or practice.



Et rege eos, et extolle illos usque in aeternum.  
and rule them, and extol those for ever and ever.

Per singulos dies benedicimus te  
On every single day we bless you

et laudamus nomen tuum in saeculum et in saeculum saeculi.  
and we praise your name into aeternity and aeternity's eternity.

Dignare, Domine, die isto sine peccato nos custodire.  
Deign, oh Lord, on this day without sin to keep us.

Miserere nostri, Domine, miserere nostri.  
Have mercy on us, Lord, have mercy on us.

Fiat misericordia tua, Domine, super nos  
There be your mercy, Lord, upon us

Quemadmodum speravimus in te.  
In as much as we have hoped for you.

In te, Domine, speravi.  
For you, Lord, have I hoped.

Non confundar in aeternum.  
I shall not be confounded eternally.

# TE DEUM

TE DE-UM LAU-DA-MUS: TE DO-MI-NUM CON-

TE DE-UM LAU-DA-MUS: TE DO-MI-NUM CON-

TS DE-UM LAU-DA-MUS: TE DO-MI-NUM CON

FI-TE-MUR. TE AE-TER-NUM PA-TREM

FI-TE-MUR. TE AE-TER-NUM PA-

FI-TE-MUR. TE AE-TER-NUM PA-

OM-NES TER-RA VE-NE-RATUR. TI-BI

TREM OM-NES TER-RA VE-NE-RATUR TI-BI

TREM OM-NES TE-RA VE-NE-RATUR, TI-BI O-MNES AN

OM-NES AN-GE-LI, TI-BI CAE-LI ET U-NI-VER-SAE PO-TES-TA-

OM-NES AN-GE-LI, TI-BI CAE-LI ET U-NI-VER-SAE PO-TES-

U-NI-VER-SAE PO-TES-

TES: TI-BI CHE-RU-BIM ET SE-RA-PHIM  
 TA-TES: TI-BI CHE-RU-BIM ET SE-RA-PHIM  
 TA-TES: TI-BI CHE-RU-BIM ET SE-RA-PHIM

IN-CE-SSA-BI-LI VO-CE PRO-CLA-MANT: SANC-TUS: SANC-TUS: SAN-  
 IN-CE-SSA-BI-LI VO-CE PRO-CLA-MANT: SANC-TUS: SANC-TUS: SA-  
 IN-CE-SSA-BI-LI VO-CE PRO-CLA-MANT SANC-TUS SANC-TUS SANC-

CTUS DO-MI-NUS DE-US SA-BA-OTH PLE-  
 CTUS DO-MI-NUS DE-US SA-BA-OTH PLE-  
 TUS DO-MI-NUS DE-US SA-BA-

NI. SUNT CAE-LI ET TER-RA MA-JES-TA-TIS GLO-RI-AE  
 NI. SUNT CAE-LI ET TE-RA MA-JES-TA-TIS GLO-RI-AE  
 OTH PLE-NI SUNT CAE-LI ET TER-RA MA-JES-TA-TIS GLO-RI-AE



TU-AE TE GLO-RI-O-SUS-A-PO- STO- LO- REM CHO-RUS: TE

TU-AE TE GLO- POS-TO- REM

TU-AE A-POS-TO- LO- REM

PRO- THE-TA- RUM LAU- DA- BI- LIS NU- ME- RUS: TE

PRO- THE-TA- RUM LAU- DA- BI- LIS NU- ME- RUS TE

CHO-RUS: TE PRO- THE-TA- RUM LAU- DA- BI- LIS NU- ME- RUS TE

MAR- TYR- RUM CAN- DI- DA- TUS LAU- DAT EX- ER- CI- TUS TE

MAR- TYR- UM CAN- DI- DA- TUS LAU- DAT EX- ER- CI- TUS TE

MAR- TYR- UM CAN- DI- DA- TUS LAU- DAT EX- ER- CI- TUS TE

PER OR- BEM TER- RA- RUM SAN- CTA -3- CON- FI-

PER OR- BEM TE- RA- RUM SAN- CTA -3- CON-

PER OR- BEM TEA- RA- RUM SANC- TA CON- FI-

TE TUR EC-CLE-SI-A: PA-TREM IM-MEN-SAE MA-JES-TA-

RI-TE-TUR EC-CLE-SI-A PA-TREM IM-MEN-SAE MA-JES-TA-

TE-TUR EC-CLE-SI-A PA-TREM IM-MEN-

TIS: VE-NE-RAN-DUM TU-UM VE-RUM, ET

TIS: VE-NE-RAN-DUM TU-UM VE-RUM, ET

SAE MA-JES-TA-TIS VE-NE-RAN-DUM TU-UM VE-RUM, ET U-NI-

U-NI-CUM FI-LI UM: SAN-CTUM QUO-QUE PA-RA-CLI-TUM

U-NI-CUM FI-LI UM SANG-TUM QUO-QUE PA-RA-CLI-TUM

CUM FI-LI-UM SANG-TUM QUO-QUE PA-RA-CLI-TUM

SPI-RI-TUM TU REX GLO-RI-AE CHRI-STE TU PA-TRIS SEM-PI-TE-

SPI-RI-TUM TU REX GLO-RI-AE CHRI-STE TU PA-TRIS SEM-

SPI-RI-TUM TU REX GLO-RI-AE CHRI-STE TU PA-TRIS SEM-PI-TER-

Handwritten musical score for the first system, featuring vocal lines and piano accompaniment. The lyrics include: *AE NO-STAI MI-SE-RI-COR DI-TU-*

Handwritten musical score for the second system, featuring vocal lines and piano accompaniment. The lyrics include: *DO-MI-NE SU-PER-NOS QUE-MAD-MO-DUM*

Handwritten musical score for the third system, featuring vocal lines and piano accompaniment. The lyrics include: *SPE-RA-VI-MUS IN TE DO-MI-NE SPE-RA-*

Handwritten musical score for the fourth system, featuring vocal lines and piano accompaniment. The lyrics include: *VI NON FUN-DAR IN AE-*

TE ET LAU-DA-MUS NO-MENTU-UM IN SAE-CU-LUM, ET IN

TE ET LAU-DA-MUS NO-MENTU-UM IN SAE-CU-LUM ET IN

TE ET LAU-DA-MUS NO-MENTU-UM IN SAE-CU-LUM ET IN

SAE-CU-LUM SAE-CU-LI DI-GNA-RE DO-MI-NE DI-E IS-TO

SAE-CU-LUM SAE-CU-LI DI-GNA-RE DO-MI-NE DI-E

SAE-CU-LUM SAE-CU-LI DI-GNA-RE

SI-NE PEL-CA-TO-NOS CUS-TO-DI-RE MI-SE-RE RE NO-STRI

IS-TO SI-NE PEL-CA-TO-NOS CUS-TO-DI-RE MI-SE-RE RE NO-STRI

RE NO-STRI

DO-MI-NE MI-SE-RE

DO-MI-NE MI-SE-RE

DO-MI-NE MI-SE-RE

NUS ES FI-LI-US TU AD LI-BE-RAN-DUM SU-SCEP-TU-RUS

HO-MI-NEM NON HOR-RU-I-STI VIR-GI-NIS U-TE-RUS

DE-RUM TU DE VIC-TOR-MOR-TIS A-CU-LE-O

A-PE-RU-I-STI CRE-DEN-TI-BUS RE-GNAE CAE-LO

IN GLO-RI-A NU-ME-RA-RI SAL-VUM FAC-TO-PU-

IN GLO-RI-A NU-ME-RA-RI SAL-VUM FAC-TO-PU-

IN GLO-RI-A NU-ME-RA-RI SAL-VUM

LUM TU-UM DO-MI-NE, ET DI-TA-TI TU-AE ET RE-GE

LUM TU-UM DO-MI-NE, ET TU-AE ET RE-GE

TU AE ET RE-GE

E-OS, ET EX-TOL-LE IL-LOS US-QUE IN AE-TER-NAM

E-OS, ET EX-TOL-LE IL-LOS US-QUE IN AE-TER-NAM

E-OS, ET EX-TOL-LE IL-LOS US-QUE IN AE-TER-NAM

PER SIN-GU-LOS DI-ES BE-NE-DI-CI-MUS

PER SIN-GU-LOS DI-ES BE-NE-DI-CI-MUS

PER SIN-GU-LOS DI-ES BE-NE-DI-CI-MUS

# TE DEUM

(5)

TE DE-UM LAU-DA-MUS: TE DO-MI-NUM CON-

TE DE-UM LAU-DA-MUS: TE DO-MI-NUM CON-

TE DE-UM LAU-DA-MUS: TE DO-MI-NUM CON

(10)

FI-TE-MUR. TE AE-TER-NUM PA-TREM

FI-TE-MUR. TE AE-TER-NUM PA-TREM

(15)

OM-NES TER-RA VE-NE-RATUR. TI-BI

OM-NES TER-RA VE-NE-RATUR, TI-BI

TREM OM-NES TE-RA VE-NE-RATUR, TI-BI

(20)

OM-NES AN-GE-LI, TI-BI CAE-LI ET U-NI-VER-SAE PO-TES-TA-

OM-NES AN-GE-LI, TI-BI CAE-LI ET U-NI-VER-SAE PO-TES-

OM-NES AN-GE-LI, TI-BI CAE-LI ET U-NI-VER-SAE PO-TES-

25

TES: TI-BI CHE-RU-BIM ET SE-RA-PHIM

TA- TES: TI-BI CHE- RIM ET SE-RA-PHIM

TA- TES: TI-BI CHE- RU- BIM ET SE-RA-PHIM

30

IN-CE-SSA-BI-LI VO-CE PRO- CLA-MANT: SANC-TUS: SANC-TUS: SAN-

IN-CE-SSA-BI-LI VO-CE PRO- CLA-MANT: SANC-TUS: SANC-TUS: SA-

IN-CE-SSA-BI-LI VO-CE PRO- CLA-MANT SANC-TUS SANC-TUS SANC-

35

CTUS DO- MI-NUS DE-US SA-BA-OTH PLE-

CTUS DO- MI-NUS DE-US SA-BA-OTH PLE-

TUS DO-MI-NUS DE-US SA-BA-

40

NI. SUNT CAE-LI ET TER-RA MA-JES-STATIS GLO-RI-AE

NI SUNT CAE-LI ET TE-RA MA-JES-STATIS GLO-RI-AE

OTH PLE-NI SUNT CAE-LI ET TER-RA MA-JES-STATIS GLO-RI-AE



45

TU-AE TE GLO-RI-O-SUS A-PO-TO-LO-REM CHO-RUS:TE

TU-AE TE GLO-RI-O-SUS A-PO-TO-LO-REM

TU-AE TE GLO-RI-O-SUS A-PO-TO-LO-REM

PRO-THETA-RUM LAU-DA-BI-LIS NU-ME-RUS:TE

PRO-THETA-RUM LAU-DA-BI-LIS NU-ME-RUS:TE

CHO-RUS:TE PRO-THETA-RUM LAU-DA-BI-LIS NU-ME-RUS:TE

B 50

55

MAR-TYR-UM CAN-DI-DATUS LAU-DAT EX-ER-CI-TUS TE

MAR-TYR-UM CAN-DI-DATUS LAU-DAT EX-ER-CI-TUS TE

MAR-TYR-UM CAN-DI-DATUS LAU-DAT EX-ER-CI-TUS TE

60

C

PER OR-BEM TER-RA-RUM SAN-CTA CON-FI-

PER OR-BEM TER-RA-RUM SAN-CTA CON-FI-

PER OR-BEM TER-RA-RUM SAN-CTA CON-FI-

65

TE TUR EC-CLE-SI-A: PA-TREM IM-MEN-SAE MA-JES-TA-

TE-TUR EC-CLE-SI-A PA-TREM IM-MEN-

70

TIS: VE-NE-RAN-DUM TU-UM VE-RUM, ET

SAE MA-JES-TA-TIS VE-NE-RAN-DUM TU-UM VE-RUM, ET U-NI-

75

U-NI-CUM FI-LI UM: SAN-CTUM QUO-QUE PA-RA-CLI-TUM

CUM FI-LI-UM SANG-TUM QUO-QUE PA-RA-CLI-TUM

76 77 78 79 80

SPI-RI-TUM TU REX GLO-RI-AE CHRI-STE TU PA-TRIS SEM-PI-TE-

SPI-RI-TUM TU REX GLO-RI-AE CHRI-STE TU PA-TRIS SEM-

SPI-RI-TUM TU REX GLO-RI-AE CHRI-STE TU PA-TRIS SEM-PI-TER-

85

Handwritten musical score for the first system, measures 85-88. It features a vocal line and a piano accompaniment. The lyrics are: "NUS ES FI-LI-US TU AD LI-BE-RAN-DUM SU-SCEP-TU-RUS". A red "3" is written above the first measure. A box labeled "E SLIDE" is present in the piano part of the second measure.

Handwritten musical score for the second system, measures 89-92. The lyrics are: "HO-MI-NEM NON HOR-RU-I-STI VIR-GI-NIS U-TE-RUS". The piano part includes triplets and various rhythmic markings.

Handwritten musical score for the third system, measures 93-96. The lyrics are: "RUM TU DE VIC-TO MOR-TIS A-CU-LE-O". A red "3" is written above the second measure. The piano part features complex rhythmic patterns and triplets.

Handwritten musical score for the fourth system, measures 97-100. The lyrics are: "A-PE-RU-I-STI CRE-DEN-TI-BUS RE-GNA CAE-LO". A red "100" is written above the first measure. The piano part includes triplets and various rhythmic markings.

REM TU AD DEX-TE-RAM DE- SE-DES,

LO-REM TU AD DEX-TE-RAM DE- SE-DES,

LO-REM TU AD DEX-TE-RAM DE- SE-DES,

IN GLO-RI-A PA-TRIS JU-DEX CRE-DE-RIS

IN GLO-RI-A PA-TRIS JU-DEX CRE-DE-RIS - ES-SE VEN-TU-RUS TE ER-GO

ES- SE VEN-TU-RUS TE ER-GO QUAE-SE-MUS TU-IS FA-MU-LIS SUB-VE-NI

ES-SE VEN-TU-RUS QUAE-SE-MUS TU-IS FA-MU-LIS SUB-VE-NI

QUAE-SE-SAE-MUS TU-IS FA-MU-LIS SUB-VE-NI, QUOS PRAE-

QUOS PRAE-TI-O-SO SAN-GUI-NE RE-DI-MI-STI. AE-TER-NA FAC-CUM SAN-CTIS TU-IS

QUOS PRAE-TI-O-SO SAN-GUI-NE RE-DI-MI-STI. AE-TER-NA FAC-CUM SAN-CTIS TU-IS

so SAN-GUI-NE RE-DI-MI-STI, AE-TER-NA FAC-CUM SAN-CTIS TU-IS

125

IN GLO-RI-A NU-ME-RA-RI SAL-VUM FAC TO-PU-

IN GLO-RI-A NU-ME-RA-RI SAL-VUM FAC TO-PU-

IN GLO-RI-A NU-ME-RA-RI SAL-VUM FAC PO-

130

LUM TU-UM DO-MI-NE, ET BE-NE-DIC HE-RE-DI-TA-TI TU-AE ET RE-GE

LUM TU-UM DO-MI-NE, ET BE-NE-DIC HE-RE-DI-TA-TI TU-AE ET RE-GE

PU-UM TU-UM DO-MI-NE ET BE-NE-DIC HE-RE-DI-TA-TI TU-AE ET RE-GE

135

E-OS, ET EX-TOL-LE IL-LOS US-QUE IN AE-TER-NAM

E-OS, ET EX-TOL-LE IL-LOS US-QUE IN AE-TER-NAM

E-OS, ET EX-TOL-LE IL-LOS US-QUE IN AE-TER-NAM

140

PER SIN-GU-LOS DI-ES BE-NE-DI-CI-MUS

PER SIN-GU-LOS DI-ES BE-NE-DI-CI-MUS

PER SIN-GU-LOS DI-ES BE-NE-DI-CI-MUS

145

TE ET LAU- DA-MUS NO- MENTU-UM IN SAE- CU- LUM, ET IN

TE ET LAU- DA- MUS NO- MENTU-UM IN SAE- CU- LUM ET IN

150

SAE- CU- LUM SAE- CU- LI DI- GNA- RE DO- MI- NE DI- E IS- TO

SAE- CU- LUM SAE- CU- LI DI- GNA- RE DO- MI- NE DI- E IS- TO

155 G

SI- NE PEL- CA- TO- NOS CUS- TO- DI- RE MI- SE- RE RE NO- STRI

IS- TO SI- NE PEL- CA- TO NOS CUS- TO- DI- RE MI- SE- RE RE NO- STRI

SI- NE PEL- CA- TO NOS CUS- TO- DI- RE MI- SE- RE- RE NO- STRI

160

DO- MI- NE MI- SE- RE RE

DO- MI- NE MI- SE- RE RE

DO- MI- NE MI- SE- RE RE

165

Handwritten musical score for measures 165-170. The system includes a vocal line and a piano accompaniment. The lyrics are: *AE NO-STAI MI-SE-RI-COR DI-TU-A*. The piano part features a bass line with notes *b, b, b, b, b, b, b, b* and a treble line with chords and melodic fragments. There are handwritten annotations such as *f*, *mf*, and circled measure numbers *165*, *166*, *167*, *168*, *169*, and *170*.

Handwritten musical score for measures 171-174. The system includes a vocal line and a piano accompaniment. The lyrics are: *DO-MI-NE SU-PER NOS QUE-MAD-MO-DUM*. The piano part features a bass line with notes *b, b, b, b, b, b, b, b* and a treble line with chords and melodic fragments. There are handwritten annotations such as *f*, *mf*, and circled measure numbers *171*, *172*, *173*, and *174*.

Handwritten musical score for measures 175-180. The system includes a vocal line and a piano accompaniment. The lyrics are: *SPE-RA-VI-MUS IN TE DO-MI-NE SPE-RA-*. The piano part features a bass line with notes *b, b, b, b, b, b, b, b* and a treble line with chords and melodic fragments. There are handwritten annotations such as *f*, *mf*, and circled measure numbers *175*, *176*, *177*, *178*, *179*, and *180*.

Handwritten musical score for measures 181-184. The system includes a vocal line and a piano accompaniment. The lyrics are: *VI NON CON-FUN-DAR*. The piano part features a bass line with notes *b, b, b, b, b, b, b, b* and a treble line with chords and melodic fragments. There are handwritten annotations such as *f*, *mf*, and circled measure numbers *181*, *182*, *183*, and *184*.

REM TU AD DEX-TE-RAM DE- I SE-DES,

LO-REM TU AD DEX-TE-RAM DE-I SE-DES,

IN GLO-RI-A PA-TRIS. JU-DEX CRE-DE-RIS

IN GLO-RI-A PA-TRIS. JU-DEX CRE-DE-RIS

ES- SE VEN-TU-RUS TE ER-GO QUAE-SE-MUS TU-IS FA-MU-LIS SUB-VE-NI

ES-SE VEN-TU-RUS TE ER-GO QUAE-SE-MUS TU-IS FA-MU-LIS SUB-VE-NI

QUOS PRE-TI-O- SO SAN-GUI-NE RE- DI- MI- STI.

TI- O- SO SAN-GUI-NE RE- DI- MI- STI



125

Handwritten musical score for system 125. It features a grand staff with treble and bass clefs. The lyrics are: "GLO-RI A NU-ME-RA-RI SAL-VUM FAC TO-PU-". There are red annotations: a "2" in the first measure of the treble staff, a "4" in the first measure of the bass staff, and another "2" and "4" in the final measure. Chord symbols like "# F#" and "G#" are present.

130

Handwritten musical score for system 130. The lyrics are: "LUM TU-UM DO-MI-NE, ET BE-NE-DIC-HE-RE-DI-TA-TI TU-AE ET RE-GE". There are red annotations: a "3" in the final measure of the treble staff, and "2 + 3" in the final measure of the bass staff. Chord symbols like "# F#" and "G#" are present.

135

Handwritten musical score for system 135. The lyrics are: "E-OS, ET EX-TOL-LE IL-LOS US-QUE IN AE-TER-NAM". There are red annotations: a "2" in the final measure of the treble staff, and a "4" in the final measure of the bass staff. Chord symbols like "# F#" and "G#" are present.

140

Handwritten musical score for system 140. The lyrics are: "PER SIN-GU-LOS DI-ES BE-NE-DI-CI-MUS". There are red annotations: a "3" in the first measure of the treble staff, a "4" in the first measure of the bass staff, and another "3" and "4" in the final measure. Chord symbols like "# F#" and "G#" are present.

145

TE ET LAU-DA-MUS NO-MENTU-UM IN SAE-CU-LUM, ET IN

TE ET LAU-DA-MUS NO-MENTU-UM IN SAE-CU-LUM ET IN

150

SAE-CU-LUM SAE-CU-LI DI-GNA-RE DO-MI-NE DI-E IS-TO

SAE-CU-LUM SAE-CU-LI DI-GNA-RE DO-MI-NE DI-E IS-TO

155

SI-NE PEL-CA-TO-NOS CUS-TO-DI-RE MI-SE-RE-RE NO-STRI

SI-NE PEL-CA-TO-NOS CUS-TO-DI-RE MI-SE-RE-RE NO-STRI

160

DO-MI-NE MI-SE-RE-RE

DO-MI-NE MI-SE-RE-RE

165

NO-STRIMI-SE-RI-COR-DI-TU-A

166 (H) 170 165

DO-MI-NE-SUPER-NOS-QUE-MAD-MO-DUM

175

SPE-RA-VI-MUS-IN-TE-IN-TE-DO-MI-NE-SPE-RA-

RA-VI-NDN-CON-FUN-DAR-IN-AE-TER

FRANK  
TE DEUM

TE DE-UM LAU-DA-MUS: TE DO- MI-NUM CON-

TE DE-UM LAU-DA-MUS: TE DO- MI-NUM CON

FI-TE-MUR. TE AE-TER- NUM PA- TREM

FI-TE-MUR. TE AE-TER- NUM PA-

OM-NES TER- RA VE-NE-RA-TUR. TI- BI OM-NES AN

TREM OM-NES TE-RAA VE-NE-RA-TUR, TI-BI O- MNES AN

OM-NES AN-GE-LI, TI-BI CAE-LI ET U-NI-VER-SAE PO-TES-TA-

U-NI-VER-SAE PO-TES-

25  
 TES: TI- BI CHE-RU- BIM ET SE- RA- PHIM

TA- TES: TI- BI CHE- RU- BIM ET SE- RA- PHIM

30  
 IN- CE- SSA- BI- LI VO- CE PRO- CLA- MANT: SANG- TUS: SANG- TUS: SAN-

IN- CES- SA- BI- LI VO- CE PRO- CLA- MANT SANG- TUS: SANG- TUS: SANC-

35  
 CTUS DO- MI- NUS DE- US SA- BA- OTH PLE-

TUS DO- MI- NUS DE- US SA- BA-

40  
 NI. SUNT CAE- LI ET TER- RA MA- JES- STA- TIS GLO- RI- AE

OTH PLE- NI SUNT CAE- LI ET TER- RA MA- JES- STA- TIS GLO- RI- AE



3/4 3/4 3/4 65

TE TUR EC-CLE-SI-A SI-A: PA-TREM IM-MEN-SAE MA-JES-TA-

TE-TUR EC-CLE-SI-A PA-TREM IM-MEN-

3/4 70

TIS: VE-NE-RAN-DUM TU-UM VE-RUM, ET U-NI-

SAE MA-JES-TA-TIS VE-NE-RAN-DUM TU-UM VE-RUM, ET U-NI-

75

U-NI-CUM FI-LI UM: SAN-CTUM QUO-QUE PA-RA-CLI-TUM

CUM FI-LI UM SANG-TUM QUO-QUE PA-RA-CLI-TUM

80

SPI-RI-TUM TU REX GLO-RI-AE CHRI-STE TU PA-TRIS SEM-PI-TER

SPI-RI-TUM TU REX GLO-RI-AE CHRI-STE TU PA-TRIS SEM-PI-TER

Handwritten musical notation for the first system, including a treble clef, a key signature of one sharp (F#), and a 3/4 time signature. The lyrics are: NUS ES FI-LI-US TU AD LI-BE-RAN-DUM SU-SCEP-TU-RUS. Above the staff, there are red annotations: "PYR" above the first measure, "PYR PYR" above the second measure, and "PYR" above the fourth measure. A circled number "85" is written above the fourth measure.

Handwritten musical notation for the second system, including a treble clef, a key signature of one sharp (F#), and a 3/4 time signature. The lyrics are: NUS ES FI-LI-US TU AD LI-BE-RAN-DUM SU-SCEP-TU-RUS. Above the staff, there are red annotations: "4 PYR" above the first measure, "PYR PYR" above the second measure, and "PYR" above the fourth measure.

Handwritten musical notation for the third system, including a treble clef, a key signature of one sharp (F#), and a 3/4 time signature. The lyrics are: HO-MI-NEM NON HOR-RU-I-STI VIR-GI-NIS U-TE-

Handwritten musical notation for the fourth system, including a treble clef, a key signature of one sharp (F#), and a 3/4 time signature. The lyrics are: HO-MI-NEM NON HOR-RU-I-STI VIR-GI-NIS U-

Handwritten musical notation for the fifth system, including a treble clef, a key signature of one sharp (F#), and a 3/4 time signature. The lyrics are: RUM TU DE VIC-TO MOR-TIS A-CU-LE-O. A circled number "95" is written above the first measure.

Handwritten musical notation for the sixth system, including a treble clef, a key signature of one sharp (F#), and a 3/4 time signature. The lyrics are: TE-RUM. TU DE VIC-TO MOR-TIS A-CU-LE-O. A circled number "100" is written above the first measure.

Handwritten musical notation for the seventh system, including a treble clef, a key signature of one sharp (F#), and a 3/4 time signature. The lyrics are: A-PE-RU-I-STI CRE-DEN-TI-BUS RE-GNA CAE-LO-. A circled number "105" is written above the fourth measure.

Handwritten musical notation for the eighth system, including a treble clef, a key signature of one sharp (F#), and a 3/4 time signature. The lyrics are: A-PE-RU-I-STI CRE-DEN-TI-BUS RE-GNA CAE-



REM TU AD DEX-TE-RAM DE- I SE-DES,

LO-REM TU AD DEX- TE- RAM DE-I SE-DES,

IN GLO-RI-A PA-TRIS JU-DEX CRE-DE-RIS

IN GLO-RI-A PA-TRIS JU-DEX CRE-DE-RIS - ES-SE VEN-TU-RUS TE ER-GO

ES- SE VEN-TU- RUS TE ER-GO QUAE-SE-MUS FA-MU-LIS

QUAE-SE - SAE-MUS TU-IS FA-MU-LIS SUB - VE - NI. QUOS PRAE-

QUOS PRAE-TI-O- SO SAN-GUI-NE RE-DI- MI-STI. NA FALCUM

TI- SAN-GUI-NE RE- DI- MI-STI. AE- TER- NA FALCUM SANCTI-TU-IS

125

Handwritten musical score for measures 125-130. The score is written on a grand staff with treble and bass clefs. The lyrics are: "GLO-RI A NU-ME-RA-RI SAL-VUM FAC TO-PU-". The music includes various notes, rests, and accidentals. There are red annotations: a "2" above the first measure, a "4" below the first measure, and a "4" below the "FAC TO-PU-" section. The key signature has one sharp (F#).

130

Handwritten musical score for measures 130-135. The lyrics are: "LUM TU-UM DO-MI-NE, ET BE-NE-DIC-IT-UR TI-BI TU-AE ET RE-GE". The music continues with similar notation. Red annotations include "PVR" written in red ink, and a "3" above the "TU-AE" section. The key signature has two sharps (F# and C#).

135

Handwritten musical score for measures 135-140. The lyrics are: "E-OS, ET EX-TOL-LE IL-LOS US-QUE IN AE-TER-NAM". The music features a long melodic line. Red annotations include a circled "F" at the start of the first measure and "PVR" written in red ink. The key signature has two sharps (F# and C#).

140

Handwritten musical score for measures 140-145. The lyrics are: "PER SIN-GU-LOS DI-ES BE-NE-DI-CI-MUS". The music includes a section with a 3/4 time signature. Red annotations include "PVR" written in red ink multiple times. The key signature has two sharps (F# and C#).

145

2 TE ET LAU- DA-MUS NO- MENTU-UM IN SAE- CU- LUM, ET IN

4 4 PYR 4 PYR

TE ET LAU-DA- MUS NO- MENTU-UM IN SAE- CU- LUM ET IN

150

SAE- CU- LUM SAE- CU- LI DI- GNA- RE DO- MI- NE DI- E IS- TO

SAE- CU- LUM SAE- CU- LI DI- GNA- RE DO- MI- NE DI- E IS- TO

155

SI- NE PEL- CA- TO- NOS CUS- TO- DI- RE MI- SE- RE- RE NO- STRI

SI- NE PEL- CA- TO NOS CUS- TO- DI- RE MI- SE- RE- RE NO- STRI

160

DO- MI- NE MI- SE- RE- RE

DO- MI- NE MI- SE- RE- RE

8

9

Handwritten musical score for voice and piano. The score is written on six systems of staves. The lyrics are in Latin and include: "NO-STRA MI-SE-RI-COR-DI-A TU-DO-MI-NE SU-PER NOS QUE-MAD-MO-DUM SPE-RA-VI-MUS IN TE. IN TE DO-MI-NE SPE-RA-VI NON CON-FUN-DAR".

Handwritten annotations in red ink include the word "PYR" repeated above several measures, circled measure numbers (165, 170, 175), and circled letters "H" and "A".

The score includes treble and bass clefs, a key signature of one sharp (F#), and various musical notations such as notes, rests, and accidentals. The lyrics are written below the notes.

This page contains a handwritten musical score on aged, yellowed paper. The score is organized into four systems, each consisting of three staves. The notation includes various note values, rests, and articulation marks. Fingerings are indicated by numbers 1-4 above notes. There are several trills and slurs throughout the piece. The paper shows signs of age, including foxing and some staining, particularly on the left side.

$\delta = 1$  *Larghetto*

Handwritten musical score for piano, consisting of five systems of three staves each. The notation includes treble and bass clefs, a common time signature 'C', various note values (half, quarter, eighth notes), rests, and accidentals (sharps, flats). The music is written in a single system with three staves per system, connected by a brace on the left. The first system begins with a treble clef and a common time signature 'C'. The notation is dense with many accidentals and some complex rhythmic patterns, including slurs and ties. The paper is aged and yellowed.

Handwritten musical notation on a three-staff system. The top staff contains a melodic line with eighth and sixteenth notes. The middle staff contains a more complex melodic line with many beamed notes. The bottom staff contains a bass line with a few notes and a sharp sign. A double bar line is present after the first measure of each staff.

Ten blank musical staves for writing.

This image shows a page of handwritten musical notation, likely a piano score, consisting of six systems of staves. Each system contains two staves, one with a treble clef and one with a bass clef. The music is written in a key signature of one sharp (F#) and a time signature of 3/4. The notation is highly detailed, featuring numerous triplets (indicated by the number '3' above or below groups of notes), slurs, and various rhythmic values. The paper is aged and yellowed, and the handwriting is in black ink.



Handwritten musical score for a 12-stave piece. The score is written in treble clef with a key signature of one sharp (F#). It features complex melodic lines with many triplets, slurs, and ornaments. The notation includes various rhythmic values and accidentals. The piece is divided into measures by vertical bar lines.

Handwritten musical score for piano, consisting of three systems of staves. The first system has two staves, the second has two staves, and the third has two empty staves. The notation includes treble and bass clefs, a key signature of one sharp (F#), and various musical symbols like notes, rests, and ornaments. Fingerings and articulation marks are present throughout the written sections.

**System 1:**

- Staff 1 (Treble Clef): Contains a melodic line with notes and rests. Fingerings 1, 2, 5, 4 are indicated above the staff.
- Staff 2 (Bass Clef): Contains a bass line with notes and rests. Fingerings 2, 3, 2 are indicated below the staff.

**System 2:**

- Staff 1 (Treble Clef): Contains a melodic line with notes and rests. Includes a trill (tr) and a slur. Fingerings 4, 3, 1, 4, 2, 5, 1, 3, 4, 2, 1, 5, 4 are indicated below the staff.
- Staff 2 (Bass Clef): Contains a bass line with notes and rests. Fingerings 2, 1, 2, 1, 5, 4, 5, 4, 3, 2, 1 are indicated below the staff.

**System 3:**

- Staff 1 (Treble Clef): Empty.
- Staff 2 (Bass Clef): Empty.

Handwritten musical notation for the first system, featuring a treble and bass clef with various notes and rests.

Handwritten musical notation for the second system, including a treble clef, a bass clef, and a triplet marking.

Handwritten musical notation for the third system, showing a treble clef, a bass clef, and a triplet marking.

Handwritten musical notation for the fourth system, featuring a treble clef, a bass clef, and various musical symbols.



Handwritten musical notation on a five-line staff. The staff begins with a treble clef and a key signature of one sharp (F#). The notation includes several measures of music with notes, rests, and dynamic markings. A large slur covers a significant portion of the staff, indicating a long note or a phrase. The handwriting is in white ink on a dark background.

Handwritten musical notation on a five-line staff. The staff begins with a treble clef and a key signature of one sharp (F#). The notation includes several measures of music with notes, rests, and dynamic markings. A large slur covers a significant portion of the staff, indicating a long note or a phrase. The handwriting is in white ink on a dark background.

Handwritten musical notation on a five-line staff. The staff begins with a treble clef and a key signature of one sharp (F#). The notation includes several measures of music with notes, rests, and dynamic markings. A large slur covers a significant portion of the staff, indicating a long note or a phrase. The handwriting is in white ink on a dark background.

Handwritten musical notation on a five-line staff. The staff begins with a treble clef and a key signature of one sharp (F#). The notation includes several measures of music with notes, rests, and dynamic markings. A large slur covers a significant portion of the staff, indicating a long note or a phrase. The handwriting is in white ink on a dark background.

5





Handwritten musical notation for the first system, featuring two staves with lyrics: TA-LES, TI-BI, CHE-RU-BIM ET SE-RA, and PHIM.

Handwritten musical notation for the second system, featuring two staves with lyrics: IN-CE-SSA-BI-LI VO-CE PRO-CLA-MANT, SANCTUS, and SANCTUS.

Handwritten musical notation for the third system, featuring two staves with lyrics: DE-US DE-US MI-NUS DE-US, and SANCTUS.

Handwritten musical notation for the fourth system, featuring two staves with lyrics: ET TER-RA MA-JES-TA-TIS, and SANCTUS.



Handwritten musical notation for the first system. The top staff contains notes with accidentals (sharps and naturals) and rests. The bottom staff contains notes with accidentals and rests. Annotations include "1-2E-RAN-DUM" and "2-2E-RAN-DUM" written vertically between the staves.

Handwritten musical notation for the second system. The top staff contains notes with accidentals and rests. The bottom staff contains notes with accidentals and rests. Annotations include "40-MI-NEW" and "NON" written vertically between the staves.

Handwritten musical notation for the third system. The top staff contains notes with accidentals and rests. The bottom staff contains notes with accidentals and rests. Annotations include "RUM" and "DE NI-TO" written vertically between the staves.

Handwritten musical notation for the fourth system. The top staff contains notes with accidentals and rests. The bottom staff contains notes with accidentals and rests. Annotations include "A-1" and "BE-RU-1" written vertically between the staves.







Handwritten musical notation on a five-line staff. The notes are written in a cursive style. Below the staff, there are several lines of text, including "IN GLO-RIA", "NU-ME-RUM", and "SA-LU-M". The text is written in a similar cursive style as the notes.

Handwritten musical notation on a five-line staff. The notes are written in a cursive style. Below the staff, there are several lines of text, including "MU-TUM", "RE-CE-PTUM", and "ET RE-CE-PTUM". The text is written in a similar cursive style as the notes.

Handwritten musical notation on a five-line staff. The notes are written in a cursive style. Below the staff, there are several lines of text, including "EX-TOL-LIT", "EX-TOL-LIT", and "EX-TOL-LIT". The text is written in a similar cursive style as the notes.

Handwritten musical notation on a five-line staff. The notes are written in a cursive style. Below the staff, there are several lines of text, including "VE-DI-CI-MUS", "VE-DI-CI-MUS", and "VE-DI-CI-MUS". The text is written in a similar cursive style as the notes.

3LAN  
TE DEUM

5

TE DE-UM LAU-DA-MUS: TE DO-MI-NUM CON-

10

FI-TE-MUR. TE AE-TER-NUM PA-TREM

15

TREM OM-NES TER-RA VE-NE-RA-TUR, TI-BI O-MNES AN-

20

OM-NES AN-GE-LI, TI-BI CAE-LI ET U-NI-VER-SAE PO-TES-TA-TES U-NI-VER-SAE PO-TES-

25

TES: TI - BI CHE - RU - BIM ET SE - RA - PHIM

TA - TES: TI - BI CHE - RU - BIM ET SE - RA - PHIM

TA - TES: TI - BI CHE - RU - BIM ET SE - RA - PHIM

30

IN - CE - SSA - BI - LI VO - CE PRO - CLA - MANT: SANC - TUS: SANC - TUS: SAN -

IN - CE - SSA - BI - LI VO - CE PRO - CLA - MANT: SANC - TUS: SANC - TUS: SA -

IN - CES - SA - BI - LI VO - CE PRO - CLA - MANT SANC - TUS SANC - TUS SANC -

35

CTUS DO - MI - NUS DE - US SA - BA - OTH PLE -

CTUS DO - MI - NUS DE - US SA - BA - OTH PLE -

TUS DO - MI - NUS DE - US SA - BA -

40

NI. SUNT CAE - LI ET TER - RA MA - JES - STA - TIS GLO - RI - AE

NI SUNT CAE - LI ET TE - RRA MA - JES - STA - TIS GLO - RI - AE

OTH PLE - NI SUNT CAE - LI ET TER - RA MA - JES - STA - TIS GLO - RI - AE

95

TU-AE TE GLO-RI-O-SUS-A-PO- STO-LO-REM CHO-RUS:TE

TU-AE TE GLO-RI-O-SUS-A-PO- STO-LO-REM

TU-AE A-POS-TO-LO-REM

PRO-PHE-TA-RUM LAU-DA-BI-LIS NU-ME-RUS:TE

PRO-PHE-TA-RUM LAU-DA-BI-LIS NU-ME-RUS:TE

CHO-RUS:TE PRO-PHE-TA-RUM LAU-DA-BI-LIS NU-ME-RUS:TE

50

MAR-TYR-RUM CAN-DI-DATUS LAU-DAT EX-ER-CI-TUS TE

MAR-TYR-UM CAN-DI-DATUS LAU-DAT EX-ER-CI-TUS TE

MAR-TYR-UM CAN-DI-DATUS LAU-DAT EX-ER-CI-TUS TE

60

PER-OR-BEM TER-RA-RUM SAN-CTA -3-CON-FI-

PER-OR-BEM TER-RA-RUM SAN-CTA -3-CON-

PER-OR-BEM TER-RA-RUM SAN-CTA CON-FI-





85

Handwritten musical score for the first system, measures 85-88. It features a vocal line and a piano accompaniment. The lyrics are: NUS ES FI-LI-US TU AD LI-BE-RAN-DUM SU-SCEP-TU-RUS.

Handwritten musical score for the second system, measures 89-92. The lyrics are: HO-MI-NEM NON HOR-RU-I-STI VIR-GI-NIS U-TE-RUS.

Handwritten musical score for the third system, measures 93-96. The lyrics are: RUM TU DE VIC-TO MOR-TIS A-CU-LE-O.

Handwritten musical score for the fourth system, measures 97-100. The lyrics are: A-PE-RU-I-STI CRE-DEN-TI-BUS RE-GNA CAE-LO.

110

REM TU AD DEX-TE-RAM DE- I SE-DES,

LO-REM TU AD DEX-TE-RAM DE-I SE-DES,

115

IN GLO-RI-A PA-TRIS JU-DEX CRE-DE-RIS

IN GLO-RI-A PA-TRIS JU-DEX CRE-DE-RIS - ES-SE VEN-TU-RUS TE ER-GO

ES-SE VEN-TU-RUS TE ER-GO QUAE-SE-MUS TU-IS FA-MU-LIS SUB-VE-NI

QUAE-SE-SAE-MUS TU-IS FA-MU-LIS SUB-VE-NI, QUOS PAE-

120

TI- O - SO SAN-GUI-NE RE- DI - MI - STI. AE- TER- NA FAC-UM SANCTIS TU-IS

TI- O - SO SAN-GUI-NE RE- DI - MI - STI AE- TER- NA FAC-UM SANCTIS TU-IS

125

IN GLO-RI-A NU-ME-RA-RI SAL-VUM FAC-TO-PU-

IN GLO-RI-A NU-ME-RA-RI SAL-VUM FAC-TO-PU-

IN GLO-RI-A NU-ME-RA-RI SAL-VUM FAC-TO-

130

LUM TU-UM DO-MI-NE, ET BE-NE-DIC-HE-RE-DI-TA-TI TU-AE ET RE-GE

LUM TU-UM DO-MI-NE, ET BE-NE-DIC-HE-RE-DI-TA-TI TU-AE ET RE-GE

PU-LUM TU-UM DO-MINE ET BE-NE-DIC-HE-RE-DI-TA-TI TU-AE ET RE-GE

F

135

E-OS, ET EX-TOL-LE IL-LOS US-QUE IN AE-TER-NAM

E-OS, ET EX-TOL-LE IL-LOS US-QUE IN AE-TER-NAM

E-OS, ET EX-TOL-LE IL-LOS US-QUE IN AE-TER-NAM

6 counting

6 counting

140

PER SIN-GU-LOS DI-ES BE-NE-DI-CI-MUS

PER SIN-GU-LOS DI-ES BE-NE-DI-CI-MUS

PER SIN-GU-LOS DI-ES BE-NE-DI-CI-MUS

brass solo

145

TE ET LAU-DA-MUS NO-MENTU-UM IN SAE-CU-LUM, ET IN

TE ET LAU-DA-MUS NO-MENTU-UM IN SAE-CU-LUM ET IN

150

SAE-CU-LUM SAE-CU-LI DI-GNA-RE DO-MI-NE DI-E IS-TO

SAE-CU-LUM SAE-CU-LI DI-GNA-RE DO-MI-NE DI-E

SAE-CU-LUM SAE-CU-LI DI-GNA-RE DO-MI-NE DI-E IS-TO

155

SI-NE PEC-CA-TO NOS CUS-TO-DI-RE MI-SE-RE RE NO-STRI

SI-NE PEC-CA-TO NOS CUS-TO-DI-RE MI-SE-RE RE NO-STRI

SI-NE PEC-CA-TO NOS CUS-TO-DI-RE MI-SE-RE RE NO-STRI

160

DO-MI-NE MI-SE-RE RE

DO-MI-NE MI-SE-RE RE

DO-MI-NE MI-SE-RE RE

♩

Handwritten musical notation for the first system, consisting of three staves (treble, alto, and bass). The music features various note values, rests, and triplets. The key signature has one flat (B-flat). The first staff has a treble clef and a common time signature. The second staff has an alto clef. The third staff has a bass clef. There are several triplets marked with a '3' and a bracket. The lyrics 'CHO-RUS TE' are written below the third staff.

Handwritten musical notation for the second system, consisting of three staves. The lyrics 'PRO-PHE-TA-RUM LAU-DA-BI-LIS' are written across the staves. There are triplets and other rhythmic markings. The lyrics 'CHO-RUS TE' are also present at the bottom of the system.

Handwritten musical notation for the third system, consisting of three staves. The lyrics 'NO-ME-RUS TE MAK-EX' are written across the staves. There are triplets and other rhythmic markings. The lyrics 'CHO-RUS TE' are also present at the bottom of the system.

Last beat meas 59

Four empty musical staves (treble, alto, and two bass) for the bottom section of the page.

softly  
seriously  
recover  
you are falling, as a kid into milk

# TE DEUM

Michael Lynch

5

TE DE-UM LAU-DA-MUS: TE DO-MI-NUM CON-

10

FI-TE-MUR. TE AE-TER-NUM PA-TREM

15

TREM OM-NES TER-RA VE-NE-RATUR. TI-BI OM-NES AN-

20

OM-NES AN-GE-LI, TI-BI CAE-LI ET U-NI-VER-SAE PO-TES-TA-

25

TES: TI - BI CHE - RU - BIM ET SE - RA - PHIM

TA - TES: TI - BI CHE - RU - BIM ET SE - RA - PHIM

TA - TES: TI - BI CHE - RU - BIM ET SE - RA - PHIM

30

IN - CE - SSA - BI - LI VO - CE PRO - CLA - MANT: SANC - TUS: SANC - TUS: SAN -

IN - CE - SSA - BI - LI VO - CE PRO - CLA - MANT: SANC - TUS: SANC - TUS: SA -

IN - CE - SSA - BI - LI VO - CE PRO - CLA - MANT SANC - TUS SANC - TUS SANC -

35

CTUS DO - MI - NUS DE - US SA - BA - OTH PLE -

CTUS DO - MI - NUS DE - US SA - BA - OTH PLE -

TUS DO - MI - NUS DE - US SA - BA -

40

NI. SUNT CAE - LI ET TER - RA MA - JES - STA - TIS GLO - RI - AE

NI. SUNT CAE - LI ET TE - RRA MA - JES - STA - TIS GLO - RI - AE

OTH PLE - NI SUNT CAE - LI ET TER - RA MA - JES - STA - TIS GLO - RI - AE

45

TU-AE TE GLO-RI-O-SUS A-PO-<sup>3</sup>STO-LO-REM CHO-RUS: TE

TU-AE TE GLO-RI-O-SUS A-PO-<sup>4</sup>STO-LO-REM

TU-AE TE GLO-RI-O-SUS A-PO-<sup>3</sup>STO-LO-REM

46

PRO-PHE-TA-RUM LAU-DA-BI-LIS NU-ME-RUS: TE

PRO-PHE-TA-RUM LAU-DA-BI-LIS NU-ME-RUS: TE

CHO-RUS: TE PRO-PHE-TA-RUM LAU-DA-BI-LIS NU-ME-RUS: TE

50 (B)

MAR-TYR-RUM CAN-DI-DA-TUS LAU-DAT EX-ER-CI-TUS TE

MAR-TYR-UM CAN-DI-DA-TUS LAU-DAT EX-ER-CI-TUS TE

MAR-TYR-UM CAN-DI-DA-TUS LAU-DAT EX-ER-CI-TUS TE

55 (C)

PER OR-BEM TER-RA-RUM SAN-CTA CON-FI-

PER OR-BEM TER-RA-RUM SAN-CTA CON-FI-

PER OR-BEM TER-RA-RUM SAN-CTA CON-FI-



65

TE - TUR EC - CLE - SI - A: PA - TREM IM - MEN - SAE MA - JES - TA -

TE - TUR EC - CLE - SI - A PA - TREM IM - MEN -

TIS: VE - NE - RAN - DUM TU - UM VE - RUM, ET

SAE MA - JES - TA - TIS VE - NE - RAN - DUM TU - UM VE - RUM, ET U - NI -

U - NI - CUM FI - LI UM: SAN - CTUM QUO - QUE PA - RA - CLI - TUM

CUM FI - LI - UM SANG - TUM QUO - QUE PA - RA - CLI - TUM

SPI - RI - TUM. TU REX GLO - RI - AE CHRI - STE TU PA - TRIS SEM - PI - TE -

SPI - RI - TUM. TU REX GLO - RI - AE CHRI - STE TU PA - TRIS SEM - PI - TER -

26

(85)

3 NUS ES FI-LI-US TU AD LI-BE-RAN-DUM SU-SCEP-TU-RUS

4 3 PI-TA-NUS ES FI-LI-US TU AD LI-BE-RAN-DUM SU-SCEP-TU-RUS

NUS ES FI-LI-US TU AD LI-BE-RAN-DUM SU-SCEP-TU-RUS

HO-MI-NEM NON HOR-RU-I-STI VIR-GI-NIS U-TE-

RUS HO-MI-NEM NON HOR-RU-I-STI VIR-GI-NIS U-TE-

HO-MI-NEM NON HOR-RU-I-STI VIR-GI-NIS U-

(95)

RUM TU DE VIC-TO MOR-TIS A-CU-LE-O

RUM TU DE VIC-TO MOR-TIS A-CU-LE-O

TE-RUM TU DE VIC-TO MOR-TIS A-CU-LE-O

(100)

A- PE-RU-I-STI CRE-DEN-TI-BUS RE-GNA CAE-LO-

A- PE-RU-I-STI CRE-DEN-TI-BUS RE-GNA CAE-

A- PE-RU-I-STI CRE-DEN-TI-BUS RE-GNA CAE-

110

REM TU AD DEX-TE-RAM DE- I SE-DES,

LO-REM TU AD DEX-TE-RAM DE-I SE-DES,

115

IN GLO-RI-A PA-TRIS JU-DEX CRE-DE-RIS

IN GLO-RI-A PA-TRIS JU-DEX CRE-DE-RIS - ES-SE VEN-TU-RUS TE ER-GO

ES-SE VEN-TU-RUS TE ER-GO QUAE-SE-MUS TU-IS FA-MU-LIS SUB-VE-NI

ES-SE VEN-TU-RUS TE ER-GO QUAE-SE-MUS TU-IS FA-MU-LIS SUB-VE-NI

QUAE-SE-SAE-MUS TU-IS FA-MU-LIS SUB-VE-NI, QUOS PAE-

120

TI- O-SO SAN-GUI-NE RE-DI-MI-STI. AE-TER-NA FAC CUM SAN-CTI-S TU-IS

TI- O-SO SAN-GUI-NE RE-DI-MI-STI. AE-TER-NA FAC CUM SAN-CTI-S TU-IS

# TE DEUM

TE DE-UM LAU-DA-MUS: TE DO-MI-NUM CON-

TE DE-UM LAU-DA-MUS: TE DO-MI-NUM CON-

TE DE-UM LAU-DA-MUS: TE DO-MI-NUM CON

FI-TE-MUR. TE AE-TER-NUM PA-TREM

FI-TE-MUR. TE AE-TER-NUM PA-TREM

FI-TE-MUR. TE AE-TER-NUM PA-

OM-NES TER-RA VE-NE-RATUR. TI-BI

TREM OM-NES TER-RA VE-NE-RATUR TI-BI

TREM OM-NES TE-RA VE-NE-RATUR, TI-BI OM-NES AN-

OM-NES AN-GE-LI, TI-BI CAE-LI ET U-NI-VER-SAE PO-TES-TA-

OM-NES AN-GE-LI, TI-BI CAE-LI ET U-NI-VER-SAE PO-TES-

OM-NES AN-GE-LI, TI-BI CAE-LI ET U-NI-VER-SAE PO-TES-

TES: TI - BI CHE - RU - BIM ET SE - RA - PHIM

TA - TES: TI - BI CHE - RU - BIM ET SE - RA - PHIM

TA - TES: TI - BI CHE - RU - BIM ET SE - RA - PHIM

IN - CE - SSA - BI - LI VO - CE PRO - CLA - MANT: SANC - TUS: SANC - TUS: SAN -

IN - CE - SSA - BI - LI VO - CE PRO - CLA - MANT: SANC - TUS: SANC - TUS: SA -

IN - CES - SA - BI - LI VO - CE PRO - CLA - MANT SANC - TUS SANC - TUS SANC -

TUS DO - MI - NUS DE - US SA - BA - OTH PLE -

TUS DO - MI - NUS DE - US SA - BA - OTH PLE -

TUS DO - MI - NUS DE - US SA - BA -

NI. SUNT CAE - LI ET TER - RA MA - JES - STA - TIS GLO - RI - AE

NI SUNT CAE - LI ET TE - RRA MA - JES - STA - TIS GLO - RI - AE

OTH PLE - NI SUNT CAE - LI ET TER - RA MA - JES - STA - TIS GLO - RI - AE

45

Handwritten musical score for measures 45-49. It consists of three staves: a vocal line (treble clef), a piano accompaniment line (treble clef), and a bass line (bass clef). The lyrics are: TU-AE TE GLO-RI-O-SUS-A-PO- STO- LO- REM CHO-RUS: TE. The score includes various musical notations such as notes, rests, and dynamic markings.

Handwritten musical score for measures 50-54. It consists of three staves: a vocal line (treble clef), a piano accompaniment line (treble clef), and a bass line (bass clef). The lyrics are: PRO- PHE- TA- RUM LAU- DA- BI- LIS NU- ME- RUS: TE. The score includes various musical notations such as notes, rests, and dynamic markings.

Handwritten musical score for measures 55-59. It consists of three staves: a vocal line (treble clef), a piano accompaniment line (treble clef), and a bass line (bass clef). The lyrics are: MAR- TYR- RUM CAN- DI- DA- TUS LAU- DAT EX- ER- CI- TUS TE. The score includes various musical notations such as notes, rests, and dynamic markings.

Handwritten musical score for measures 60-64. It consists of three staves: a vocal line (treble clef), a piano accompaniment line (treble clef), and a bass line (bass clef). The lyrics are: PER OR- BEM TER- RA- RUM SAN- CTA CON- FI-. The score includes various musical notations such as notes, rests, and dynamic markings.

TE TUR EC-CLE-SI-A: PA-TREM IM-MEN-SAE MA-JES-TA-

RI-TE-TUR EC-CLE-SI-A PA-TREM IM-MEN-SAE MA-JES-TA-

TE-TUR EC-CLE-SI-A PA-TREM IM-MEN-

TIS: VE-NE-RAN-DUM TU-UM VE-RUM, ET

TIS: VE-NE-RAN-DUM TU-UM VE-RUM, ET

SAE MA-JES-TA-TIS VE-NE-RAN-DUM TU-UM VE-RUM, ET NI-

U-NI-CUM FI-LI UM: SAN-CTUM QUO-QUE PA-RA-CLI-TUM

U-NI-CUM FI-LI UM SANG-TUM QUO-QUE PA-RA-CLI-TUM

CUM FI-LI-UM SANG-TUM QUO-QUE PA-RA-CLI-TUM

SPI-RI-TUM TU REX GLO-RI-AE CHRI-STE TU PA-TRIS SEM-PI-TE-

SPI-RI-TUM TU REX GLO-RI-AE CHRI-STE TU PA-TRIS SEM-

SPI-RI-TUM TU REX GLO-RI-AE CHRI-STE TU PA-TRIS SEM-PI-TER-

(D)

Handwritten musical score for the first system, measures 85-89. It features a vocal line and a piano accompaniment. The lyrics are: NUS ES FI-LI-US TU AD LI-BE-RAN-DUM SU-SCEP-TU-RUS. The piano part includes a red 'S' marking and various rhythmic notations.

Handwritten musical score for the second system, measures 90-94. The lyrics are: HO-MI-NEM NON HOR-RU-I-STI VIR-GI-NIS U-TE-RUS. The piano accompaniment continues with complex chordal textures.

Handwritten musical score for the third system, measures 95-99. The lyrics are: RUM TU DE VIC-TO MOR-TIS A-CU-LE-O. The piano part features a red 'S' marking and detailed rhythmic notation.

Handwritten musical score for the fourth system, measures 100-104. The lyrics are: A-PE-RU-I-STI CAE-LEN-TI-BUS RE-GNA CAE-LO. The piano accompaniment includes a red 'S' marking and various rhythmic patterns.



REM TU AD DEX-TE-RAM DE- I SE-DES,

LO-REM TU AD DEX-TE-RAM DE-I SE-DES,

IN GLO-RI-A PA-TRIS. JU-DEX CRE-DE-RIS

IN GLO-RI-A PA-TRIS. JU-DEX CRE-DE-RIS - ES-SE VEN-TU-RUS TE ER-GO

ES- SE VEN-TU- RUS TE ER-GO QUAE-SE-MUS TU-IS FA-MU-LIS SUB-VE-NI

ES-SE VEN-TU-RUS TE ER-GO QUAE-SE-MUS TU-IS FA-MU-LIS SUB-VE-NI

QUAE - SAE - MUS TU-IS FA-MU-LIS SUB - VE - NI, QUOS PRAE-

QUOS PRAE-TI-O- SO SAN-GUI-NE RE-DI- MI-STI. AE- TER- NA FALCUM SANC-TIS TU-IS

QUOS PRAE-TI-O- SO SAN-GUI-NE RE-DI- MI-STI. AE- TER- NA FALCUM SANC-TIS TU-IS

TI- O - SO SAN-GUI-NE RE- DI - MI- STI. AE- TRA- NA FALCUM SANC-TIS TU- I



Handwritten musical notation for measures 125-128. The system includes a vocal line and a piano accompaniment. The lyrics are: "IN GLO-RI-A NU-ME-RA-RI SAL-VUM FAC TO-PU-". The piano part features a bass line with a 4-measure rest in the first measure and various chords and intervals throughout. There are red markings, including a '2' and a '4', and some corrections in the piano part.

Handwritten musical notation for measures 130-135. The system includes a vocal line and a piano accompaniment. The lyrics are: "LUM TU-UM DO-MI-NE, ET BE-NE-DIC-HE-RE-DI-TA-TI TU-AE ET RE-GE". The piano part continues with a bass line and chords. There are red markings and some corrections in the piano part.

Handwritten musical notation for measures 135-140. The system includes a vocal line and a piano accompaniment. The lyrics are: "E-OS, ET EX-TOL-LE IL-LOS US-QUE IN AE-TER-NAM". The piano part continues with a bass line and chords. There are red markings and some corrections in the piano part.

Handwritten musical notation for measures 140-145. The system includes a vocal line and a piano accompaniment. The lyrics are: "PER SIN-GU-LOS DI-ES BE-NE-DI-CI-MUS". The piano part continues with a bass line and chords. There are red markings and some corrections in the piano part. A box labeled "BRASS SOLO" is drawn around the piano part in the second measure of this system.

145

TE ET LAU-DA-MUS NO-MENTU-UM IN SAE-CU-LUM, ET IN

TE ET LAU-DA-MUS NO-MENTU-UM IN SAE-CU-LUM ET IN

TE ET LAU-DA-MUS NO-MENTU-UM IN SAE-CU-LUM ET IN

150

SAE-CU-LUM SAE-CU-LI DI-GNA-RE DO-MI-NE DI-E IS-TO

SAE-CU-LUM SAE-CU-LI DI-GNA-RE DO-MI-NE DI-E

SAE-CU-LUM SAE-CU-LI DI-GNA-RE DO-MI-NE DI-E IS-TO

155

SI-NE PEC-CA-TO NOS CUS-TO-DI-RE MI-SE-RE-RE NO-STRI

IS-TO SI-NE PEC-CA-TO NOS CUS-TO-DI-RE MI-SE-RE-RE NO-STRI

SI-NE PEC-CA-TO NOS CUS-TO-DI-RE MI-SE-RE-RE NO-STRI

160

DO-MI-NE MI-SE-RE-RE

DO-MI-NE MI-SE-RE-RE

DO-MI-NE MI-SE-RE-RE

Handwritten musical notation for the first system, measures 165-170. It features a vocal line and a piano accompaniment. The lyrics are: NO-STRI-MI-SE-RI-COR-DI-TU-A. The piano part includes dynamic markings like 'f' and 'mf'.

Handwritten musical notation for the second system, measures 170-175. The lyrics are: DO-MI-NE SU-PER NOS QUE-MAD-MO-DUM. The piano part includes dynamic markings like 'mf' and 'f'.

Handwritten musical notation for the third system, measures 175-180. The lyrics are: SPE-RA-VI-MUS IN TE DO-MI-NE SPE-RA-. The piano part includes dynamic markings like 'f'.

Handwritten musical notation for the fourth system, measures 180-185. The lyrics are: RA-VI NON CON-FUN-DAR IN. The piano part includes dynamic markings like 'f'.

# TE DEUM

TE DE-UM LAU-DA-MUS: TE DO-MI-NUM CON-

FI-TE-MUR. TE AE-TER-NUM PA-TREM

OM-NES TER-RA VE-NE-RA-TUR. TI-BI OM-NES AN-

OM-NES AN-GE-LI, TI-BI CAE-LI ET U-NI-VER-SAE PO-TES-TA-TES

TES: TI- BI CHE-RU- BIM ET SE- RA- PHIM

TA- TES: TI- BI CHE- RU- BIM ET SE- RA- PHIM

TA- TES: TI- BI CHE- RU- BIM ET SE- RA- PHIM

IN- CE- SSA- BI- LI VO- CE PRO- CLA- MANT: SANC- TUS: SANC- TUS: SANC-

IN- CE- SSA- BI- LI VO- CE PRO- CLA- MANT: SANC- TUS: SANC- TUS: SA-

IN- CES- SA- BI- LI VO- CE PRO- CLA- MANT SANC- TUS SANC- TUS SANC-

CTUS DO- MI- NUS DE- US SA- BA- OTH PLE-

CTUS DO- MI- NUS DE- US SA- BA- OTH PLE-

TUS DO- MI- NUS DE- US SA- BA-

NI. SUNT CAE- LI ET TER- RA MA- JES- STA- TIS GLO- RI- AE

NI SUNT CAE- LI ET TE- RRA MA- JES- STA- TIS GLO- RI- AE

OTH PLE- NI SUNT CAE- LI ET TER- RA MA- JES- STA- TIS GLO- RI- AE

TU-AE TE GLO-RI-O-SUS-A-PO- STO-LO-REM CHO-RUS:TE

TU-AE TE GLO- POS-TO-LO-REM

TU-AE A-POS-TO-LO-REM

PRO-PHE-TA-RUM LAU-DA-BI-LIS NU-ME-RUS:TE

PRO-PHE-TA-RUM LAU-DA-BI-LIS NU-ME-RUS:TE

CHO-RUS:TE PRO-PHE-TA-RUM LAU-DA-BI-LIS NU-ME-RUS:TE

MAR-TYR-RUM CAN-DI-DA-TUS LAU-DAT EX-ER-CI-TUS TE

MAR-TYR-UM CAN-DI-DA-TUS LAU-DAT EX-ER-CI-TUS TE

MAR-TYR-UM CAN-DI-DA-TUS LAU-DAT EX-ER-CI-TUS TE

PER-OR-BEM TER-RA-RUM SAN-CTA CON-FI-

PER-OR-BEM TER-RA-RUM SAN-CTA CON-

PER-OR-BEM TER-RA-RUM SAN-CTA CON-FI-





Handwritten musical notation for the first system, including vocal lines and piano accompaniment. The lyrics are: NUS ES FI-LI-US TU AD LI-BE-RAN-DUM SU-SCEP-TU-RUS

Handwritten musical notation for the second system, including vocal lines and piano accompaniment. The lyrics are: HO-MI-NEM NON HOR-RU-I-STI VIR-GI-NIS U-TE-RUS

Handwritten musical notation for the third system, including vocal lines and piano accompaniment. The lyrics are: TE-RUM TU DE VIC-TO MOR-TIS A-CU-LE-O

Handwritten musical notation for the fourth system, including vocal lines and piano accompaniment. The lyrics are: A-PE-RU-I-STI CRE-DEN-TI-BUS RE-GNA CAE-LO

REM TU AD DEX-TE-RAM DE- I SE-DES,

LO-REM TU AD DEX-TE-RAM DE-I SE-DES,

IN GLO-RI-A PA-TRIS JU-DEX CRE-DE-RIS

IN GLO-RI-A PA-TRIS JU-DEX CRE-DE-RIS- ES-SE VEN-TU-RUS TE ER-GO

ES- SE VEN-TU-RUS TE ER-GO QUAE-SE-MUS TU-IS FA-MU-LIS SUB-VE-NI

ES-SE VEN-TU-RUS TE ER-GO QUAE-SE-MUS TU-IS FA-MU-LIS SUB-VE-NI

QUAE-SE-SAE-MUS TU-IS FA-MU-LIS SUB-VE-NI, QUOS PAE-

QUOS PAE-TI-O-SO SAN-GUI-NE RE-DI-MI-STI.

QUOS PAE-TI-O-SO SAN-GUI-NE RE-DI-MI-STI.

TI- O-SO SAN-GUI-NE RE-DI-MI-STI

IN GLO-RI-A NU-ME-RA-RI SAL-VUM FAC-TO-PU-

IN GLO-RI-A NU-ME-RA-RI SAL-VUM FAC-TO-PU-

IN GLO-RI-A NU-ME-RA-RI SAL-VUM

LUM TU-UM DO-MI-NE, ET DI-TA-TI TU-AE ET RE-GE

LUM TU-UM DO-MI-NE, ET DI-TA-TI TU-AE ET RE-GE

TU AE ET RE-GE

E-OS, ET EX-TOL-LE IL-LOS US-QUE IN AE-TER-NAM

E-OS, ET EX-TOL-LE IL-LOS US-QUE IN AE-TER-NAM

E-OS, ET EX-TOL-LE IL-LOS US-QUE IN AE-TER-NAM

PER SIN-GU-LOS DI-ES BE-NE-DI-CI-MUS

PER SIN-GU-LOS DI-ES BE-NE-DI-CI-MUS

PER SIN-GU-LOS DI-ES BE-NE-DI-CI-MUS

TE ET LAU-DA-MUS NO-MENTU-UM IN SAE-CU-LUM, ET IN

TE ET LAU-DA-MUS NO-MENTU-UM IN SAE-CU-LUM ET IN

TE ET LAU-DA-MUS NO-MENTU-UM IN SAE-CU-LUM ET IN

SAE-CU-LUM SAE-CU-LI DI-GNA-RE DO-MI-NE DI-E IS-TO

SAE-CU-LUM SAE-CU-LI DI-GNA-RE DO-MI-NE DI-E

SAE-CU-LUM SAE-CU-LI DI-GNA-RE

SI-NE PEL-CA-TO-NOS CUS-TO-DI-RE MI-SE-RE RE NO-STRI

IS-TO SI-NE PEL-CA-TO-NOS CUS-TO-DI-RE MI-SE-RE RE NO-STRI

RE NO-STRI

DO-MI-NE MI-SE-RE RE

DO-MI-NE MI-SE-RE RE

DO-MI-NE MI-SE-RE RE

Handwritten musical score for the first system, featuring vocal lines and piano accompaniment. The lyrics include: *AE NO-STRI MI-SE-RI-COR-DI-A TU-*

Handwritten musical score for the second system, featuring vocal lines and piano accompaniment. The lyrics include: *DO-MI-NE SU-PERNOS QUE-MAD-MO-DUM*

Handwritten musical score for the third system, featuring vocal lines and piano accompaniment. The lyrics include: *SPE-RA-VI-MUS IN TE. TE DO-MI-NE SPE-RA-*

Handwritten musical score for the fourth system, featuring vocal lines and piano accompaniment. The lyrics include: *VI NON CON-FUN-DAR IN AE-*

165

RE NO-STRA MI-SE-RI-COR-DI-TU-A

170

DO-MI-NE SU-PER NOS QUE-MAD-MO-DUM

175

SPE-RA-VI-MUS IN TE. IN TE DO-MI-NE SPE-RA-

RA-VI NON CON-FUN-DAM IN AE-TER-NUM.

PARCHMENT BRAND No 3 - 12 lines Printed in U.S.A. Belwin, Inc. New York, U.S.A.